

# Clementine

Percy Montrose  
Arranged by Blake West

Key: C

3/4

In a cav - ern in a can - yon ex - ca - va - ting for a

Detailed description: This system contains the first four measures of the song. The treble clef staff has a 3/4 time signature. The melody starts with a whole note G4, followed by a half note A4, and then a quarter note B4. The lyrics 'In a cav - ern in a can - yon ex - ca - va - ting for a' are written below the notes. The bass clef staff has a 3/4 time signature and contains a whole note G2, followed by a half note A2, and then a quarter note B2. There are double bar lines in the second and third measures of the bass staff.

mine dwelt a min - er for - ty nin - er and his daugh - ter Clem - en

Detailed description: This system contains the next four measures. The treble clef staff continues the melody with a quarter note C5, a half note D5, and a quarter note E5. The lyrics 'mine dwelt a min - er for - ty nin - er and his daugh - ter Clem - en' are written below. The bass clef staff continues with a whole note G2, followed by a half note A2, and then a quarter note B2. There are double bar lines in the second and third measures of the bass staff.

tine oh my dar - ling Oh my dar - ling Oh my dar - ling Clem - en - tine you are

Detailed description: This system contains the next four measures. The treble clef staff continues the melody with a quarter note F5, a half note G5, and a quarter note A5. The lyrics 'tine oh my dar - ling Oh my dar - ling Oh my dar - ling Clem - en - tine you are' are written below. The bass clef staff continues with a whole note G2, followed by a half note A2, and then a quarter note B2. There are double bar lines in the second and third measures of the bass staff.

lost and gone for - ev - er dread - ful sor - ry Clem - en - tine

Detailed description: This system contains the final four measures. The treble clef staff continues the melody with a quarter note B5, a half note C6, and a quarter note B5. The lyrics 'lost and gone for - ev - er dread - ful sor - ry Clem - en - tine' are written below. The bass clef staff continues with a whole note G2, followed by a half note A2, and then a quarter note B2. There are double bar lines in the second and third measures of the bass staff.

# Quick Guide to Hummingbird

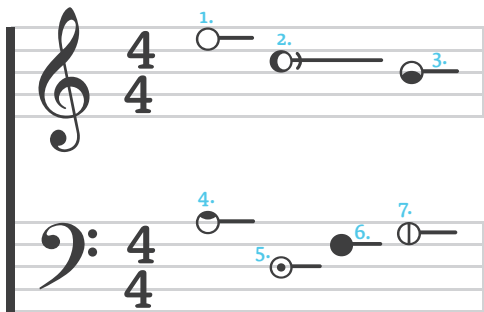
## 1 Learn the helper words

Each note has a symbol and a “helper word” that describes how that note looks. Say the note name and its helper word out loud to yourself (ie. “A for Above”, “C looks like ‘C’”). Do that twice and you’re set!

- A: above    ◐ B: below    ○ C: “C”
- ⊙ D: dot    ○ E: empty    ● F: full    ⊕ G: groove



## 2 Test yourself



Use your hand to cover up the symbols above, and see if you can read these notes. (Answers at the bottom)



## 3 Congrats!

You’re reading music! Here’s a summary of some more info. For the the full guide and more songs, visit [www.HummingbirdNotation.com](http://www.HummingbirdNotation.com).

Pitch	Rest		Rhythm
⊕ G: groove	((	Whole	● )) —————
● F: full	(	1/2	● ) ———
○ E: empty	~	1/4	● —
⊙ D: dot	~	1/8	● or ● ● ● ●
◐ B: below	~	1/16	● or ● ● ● ●
○ A: above	+	1/32	● or ● ● ● ●
♯ Sharp	+		
♭ Flat	≠		