

Crazy Train

Written by Osbourne, Rhoades, Daisley

Arranged by Blake West

Key: Em

The first system consists of two staves. The top staff is a treble clef with a 4/4 time signature, containing four measures of whole rests. The bottom staff is a bass clef with a 4/4 time signature, containing four measures of chords. Each measure starts with a whole note chord, followed by a half note chord, and then a whole note chord. The chords are: E2-A2 (first measure), E2-A2 (second measure), E2-A2 (third measure), and E2-A2 (fourth measure). Fingering numbers 1 and 5 are shown above the notes. The bass clef staff also includes a series of circles below the notes, likely representing fret positions or a specific notation system.

The second system consists of two staves. The top staff is a treble clef with a 4/4 time signature, containing four measures of whole rests. The bottom staff is a bass clef with a 4/4 time signature, containing four measures of chords. Each measure starts with a whole note chord, followed by a half note chord, and then a whole note chord. The chords are: E2-A2 (first measure), E2-A2 (second measure), E2-A2 (third measure), and E2-A2 (fourth measure). Fingering numbers 1 and 5 are shown above the notes. The bass clef staff also includes a series of circles below the notes, likely representing fret positions or a specific notation system.

The third system consists of two staves. The top staff is a treble clef with a 4/4 time signature, containing four measures of eighth notes. The notes are: E4 (first measure), G4 (second measure), B4 (third measure), and D5 (fourth measure). Fingering numbers 1 and 5 are shown above the notes. The bottom staff is a bass clef with a 4/4 time signature, containing four measures of chords. Each measure starts with a whole note chord, followed by a half note chord, and then a whole note chord. The chords are: E2-A2 (first measure), E2-A2 (second measure), E2-A2 (third measure), and E2-A2 (fourth measure). Fingering numbers 1 and 5 are shown above the notes. The bass clef staff also includes a series of circles below the notes, likely representing fret positions or a specific notation system.

The fourth system consists of two staves. The top staff is a treble clef with a 4/4 time signature, containing four measures of eighth notes. The notes are: E4 (first measure), G4 (second measure), B4 (third measure), and D5 (fourth measure). Fingering numbers 1 and 5 are shown above the notes. The bottom staff is a bass clef with a 4/4 time signature, containing four measures of chords. Each measure starts with a whole note chord, followed by a half note chord, and then a whole note chord. The chords are: E2-A2 (first measure), E2-A2 (second measure), E2-A2 (third measure), and E2-A2 (fourth measure). Fingering numbers 1 and 5 are shown above the notes. The bass clef staff also includes a series of circles below the notes, likely representing fret positions or a specific notation system.

Crazy Train

men-tal-wounds not heal - ling _____ life's a bit ter shame I'm

go-ing off the rails on a cra-zy tra - in I'm

go-ing off the rails on a cra-zy tra - in

Crazy Train

The image displays two systems of musical notation for the song "Crazy Train". Each system consists of a treble clef staff and a bass clef staff. The first system shows the initial three measures of the piece. The treble staff contains a melodic line with eighth and quarter notes, some marked with a 't' for tenuto. The bass staff provides a rhythmic accompaniment with eighth and quarter notes, including slurs and accents. The second system continues the piece for three more measures, featuring similar melodic and rhythmic patterns. The notation includes various articulation marks such as slurs, accents, and tenuto marks to guide the performer.

Quick Guide to Hummingbird

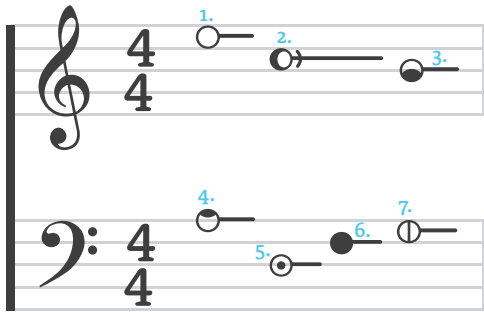
1 Learn the helper words

Each note has a symbol and a “helper word” that describes how that note looks. Say the note name and its helper word out loud to yourself (ie. “A for Above”, “C looks like ‘C’”). Do that twice and you’re set!

- A: above ◐ B: below ○ C: “C”
- ⊙ D: dot ○ E: empty ● F: full ⊕ G: groove



2 Test yourself



Use your hand to cover up the symbols above, and see if you can read these notes. (Answers at the bottom)



3 Congrats!

You’re reading music! Here’s a summary of some more info. For the the full guide and more songs, visit www.HummingbirdNotation.com.

Pitch	Rest		Rhythm
⊕ G: groove	((Whole	●)) —————
● F: full	(1/2	●) —————
○ E: empty	~	1/4	● —————
⊙ D: dot	~	1/8	● or ● ● ● ●
◐ B: below	~	1/16	● or ● ● ● ●
○ A: above	+	1/32	● or ● ● ● ●
♯ Sharp	+		
♭ Flat	≠		