

# Just The Way You Are

Bruno Mars  
Arranged by Blake West

When I see your face \_\_\_\_\_ there's not a thing\_\_ that\_\_ I\_\_ would change

This system contains the first two measures of the song. The treble clef staff shows a melody starting on a whole note, followed by quarter notes and eighth notes. The bass clef staff provides a simple accompaniment with whole notes and quarter notes. Fingerings are indicated by numbers 1, 3, 4, 5, and 3.

'cause your a - ma - zing \_\_\_\_\_ Just the\_\_ way\_\_ you\_\_ are

This system contains the next two measures. The treble clef staff continues the melody with quarter and eighth notes. The bass clef staff continues the accompaniment. Fingerings include 1, 4, and 5.

and when I see your smile \_\_\_\_\_ the whole world\_stops and\_\_ stares\_a\_\_ while

This system contains the next two measures. The treble clef staff features a melody with quarter and eighth notes. The bass clef staff has a bass line with quarter notes and rests. Fingerings include 1, 3, 1, and 3.

'cause your a - ma - zing \_\_\_\_\_ just the\_\_ way\_\_ you\_\_ are

This system contains the final two measures of the song. The treble clef staff concludes the melody. The bass clef staff concludes the accompaniment. Fingerings include 1, 3, and 5.

# Quick Guide to Hummingbird

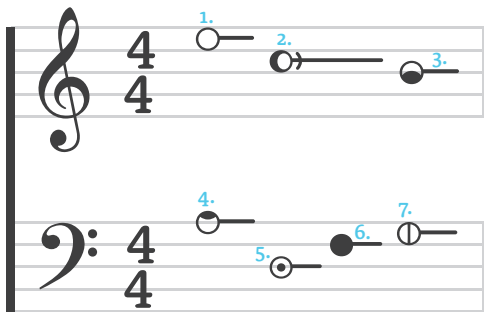
## 1 Learn the helper words

Each note has a symbol and a “helper word” that describes how that note looks. Say the note name and its helper word out loud to yourself (ie. “A for Above”, “C looks like ‘C’”). Do that twice and you’re set!

- A: above    ◐ B: below    ○ C: “C”
- ⊙ D: dot    ○ E: empty    ● F: full    ⊕ G: groove



## 2 Test yourself



Use your hand to cover up the symbols above, and see if you can read these notes. (Answers at the bottom)



## 3 Congrats!

You’re reading music! Here’s a summary of some more info. For the the full guide and more songs, visit [www.HummingbirdNotation.com](http://www.HummingbirdNotation.com).

Pitch	Rest		Rhythm
⊕ G: groove	((	Whole	● )) —————
● F: full	(	1/2	● ) ———
○ E: empty	~	1/4	● —
⊙ D: dot	~	1/8	● or ● ● ● ●
◐ B: below	~	1/16	● or ● ● ● ●
○ A: above	+	1/32	● or ● ● ● ●
♯ Sharp	+		
♭ Flat	≠		